

# V-SERIES

NEXT LEVEL LUXURY HOME ELEVATOR

Cibes

# CIBES – SINCE 1947

Cibes Lift Group is one of the world's largest manufacturers of low-speed lifts, with sales and distribution in more than 70 countries, and a network of 200+ certified distributors.



WHAT MAKES CIBES SPECIAL?

## A GLOBAL SALES NETWORK

PEORIA, USA  
Production, R&D

GÄVLE, SWEDEN  
HQ, Production, R&D

JIAXING, CHINA  
Production, R&D

GDANSK, POLAND  
Production



WORDS FROM OUR CEO,  
**PER LIDSTRÖM**



One does not build a company that lasts over 77 years without an unwavering commitment to customer satisfaction. Cibes fully embraces the Scandinavian ethos of reliability, which is why we are uncompromising when it comes to the quality of our products, the elegance of our designs and our commitment to safety. From the start, our best marketing has always been our existing customers, and the 100,000+ lifts we have installed around the world continue to be a driver of our success. At Cibes, we know that our happy customers are the key to our longevity, and we look forward to having you join the Cibes family!

*Per Lidström*

CEO, CIBES LIFT GROUP

ABOUT

## CIBES LIFT GROUP IN 2023

**323**

MILLION EUROS

In turnover in 2023

**1,635**

EMPLOYEES

Across the world

**100,000+**

LIFTS INSTALLED

In 70+ countries

# SPACE - SAVING TECHNOLOGY

## NO MACHINE ROOM

Minimize civil works and able to open up on last floor without damage to roof area

## ALL GLASS SHAFT

Able to do 360° glass shaft for a panoramic ride

## SCREW DRIVE SYSTEM

Your lift is always attached to our screw and cannot “fall down”.  
Silent and energy efficient

## SUPERIOR QUALITY

From our glass (laminated and tempered) to our shaft (aviation grade aluminum with premium custom powdercoat), every detail of our lift is carefully studied to offer the best quality.

## TOUCH AND LIGHT

Our Cibes lifts come with full touchscreen to offer a modern design that can match any interior

## CABIN DESIGN

Our lifts are glass cabin lifts that offer full walls on three sides with a light-curtain opening on the door side for unparalleled levels of safety

## ANTI-STUCK SYSTEM

Battery back up, reset tag on door, phone and emergency openings – we have you covered even if the worst were to happen!

## NO PIT

Installing our lift is simple – it requires minimal civil works and comes with its own shaft



# HISTORY OF SCREW - DRIVE SCREW-DRIVE GENERATIONS



4<sup>th</sup> GENERATION  
**ECOSILENT 2.0**

- **Reduced oil use:** no oil on guidrails, auto-lubricating system on screw, >200 mL of oil / year!
- **More energy savings:** 1.5 kW motor
- **Silent operation:** new screw pitch and silent box for sound as low as 40 dB
- **Reduced maintenance:** as low as once per year

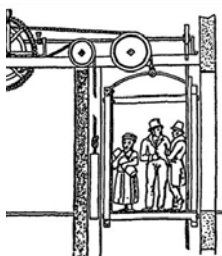
Includes all  
2<sup>nd</sup> Generation / Smart Lift features



2<sup>nd</sup> GENERATION  
**SMART LIFT**

- **Mechanical System:** all functions were mechanical and not driven by software
- **Lower Travel Height:** up to 13 m

1<sup>st</sup> generation lifts were *discontinued*  
in 2017 for all Cibes Lift Group  
products



1<sup>st</sup> SCREW-DRIVE  
**ELEVATOR**

2022

- **Even Safer Lift!** – light curtain upgrade for safety edges for near-instantaneous stops, 2N dialer to ensure always functional phone
- **Even Smoother Ride** – Upgraded XXL rollers for an ultra smooth guiderail connection
- **Connected Lift** – connected to our Cibes Control Center for monitoring and remote assistance if needed

Includes all  
2<sup>nd</sup> Generation / Smart Lift features



3<sup>rd</sup> GENERATION  
**ECOSILENT**

- **Smart Operating System:** digital OS (i.e. software)
- **Safer Lift** – thanks to our CiCon System, our lift can be SIL-3 certified, the second highest Safety Integrity Level available
- **Reset RFID Tag** – you can reset the lift yourself – no need to wait for one of our technicians
- **Warning Systems:** e.g. low battery system
- **Fault and Breakage Record:** keeps track of all key metrics e.g. travel distance, number of faults and reason to help improve repairs
- **Higher Travel height:** from 13m up to 20 m!
- **Advanced Features:** e.g. floor specific locks

2019

2017

1990s



1<sup>st</sup> GENERATION  
**MECHANICAL**

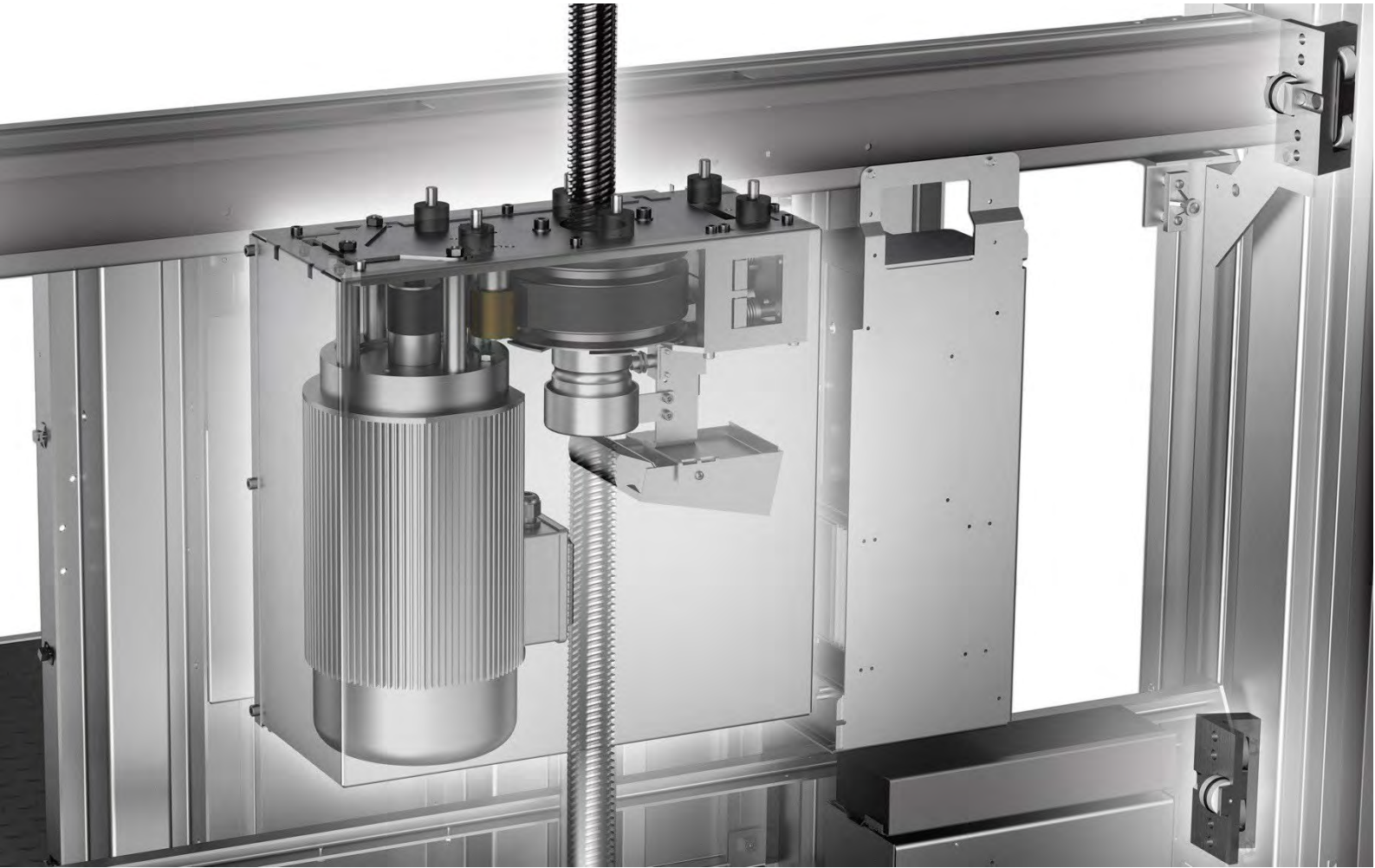
1793

Invented for the Russian empress Catherine the Great by inventor Ivan Kulibin, the 1<sup>st</sup> screw drive elevator was installed in the imperial palace The Hermitage in St. Petersburg



SAFETY IS IN OUR DNA

# SWEDISH FOCUS ON QUALITY



SCREW DRIVE TECHNOLOGY:

## LIFTS THAT CANNOT “FALL DOWN”

Cibes lifts utilize advanced **screw-drive technology**, setting them apart from traditional lift systems. Unlike cable- or belt-driven lifts, where movement relies on pulling mechanisms, our lifts operate through the rotation of a nut around a toughened steel screw, ensuring smooth and reliable motion.

This innovative system provides unmatched safety and stability, eliminating the risk of freefall due to cable or brake failures. The platform or cabin remains securely connected to the steel screw, which extends the entire length of the lift, guaranteeing **a safe, dependable, and long-lasting lifting solution**.

Thanks to this technology, our screw-drive lifts meet not only the extremely high **European Safety** Standards but also those of our other global markets, including but not limited to the **USA and Australia**



## STANDARDS

All our lifts not only follow the strictest of European and international standards, but we even strive to respect recommended local standards in each of our markets.



## SAFETY CERTIFICATIONS

All our lifts are certified by the European Lift Instituut, meet SIL 3 safety standards and our production process is ISO 9001 certified, ensuring the highest standards of safety and quality



## NATIONWIDE, 24/7 COVERAGE

While we operate globally, we remain deeply local for our customers. With a 24/7 hotline and technicians positioned across the country, we ensure prompt support anytime, anywhere.



## ANTI-TRAP SYSTEM FOR EMERGENCIES

All our lifts come equipped with an emergency battery lowering system for power failures, along with a reset system for added convenience. Additionally, Gen 4 models feature manual lowering in the pit for enhanced safety and control.

## GENERATION 4 EXCLUSIVES



## LIGHT CURTAIN FOR LASER-FAST SAFETY

The combination of Cibes light curtain to stop near instantaneously in emergency situations, and the cabin design of our V70 / V90 allows us to reach a new level of safety.



## 2N PHONE SYSTEM CONNECTIVITY MONITORING

Our special 2N dialer, conform with the EN 81-20:50 European regulations, automatically checks that your phone line is active every day to ensure your safety phone is always on.

OUR PRODUCT RANGE

# GLASS SHAFT (V-Series)



**V80**  
PLATFORM



**V90**  
CABIN

TIER I  
**ELEGANCE**



TIER II  
**AURORA**



TIER III  
**GALAXY**





OUR PRODUCT RANGE

# V70 SHAFTLESS Series



TIER I  
**ELEGANCE**



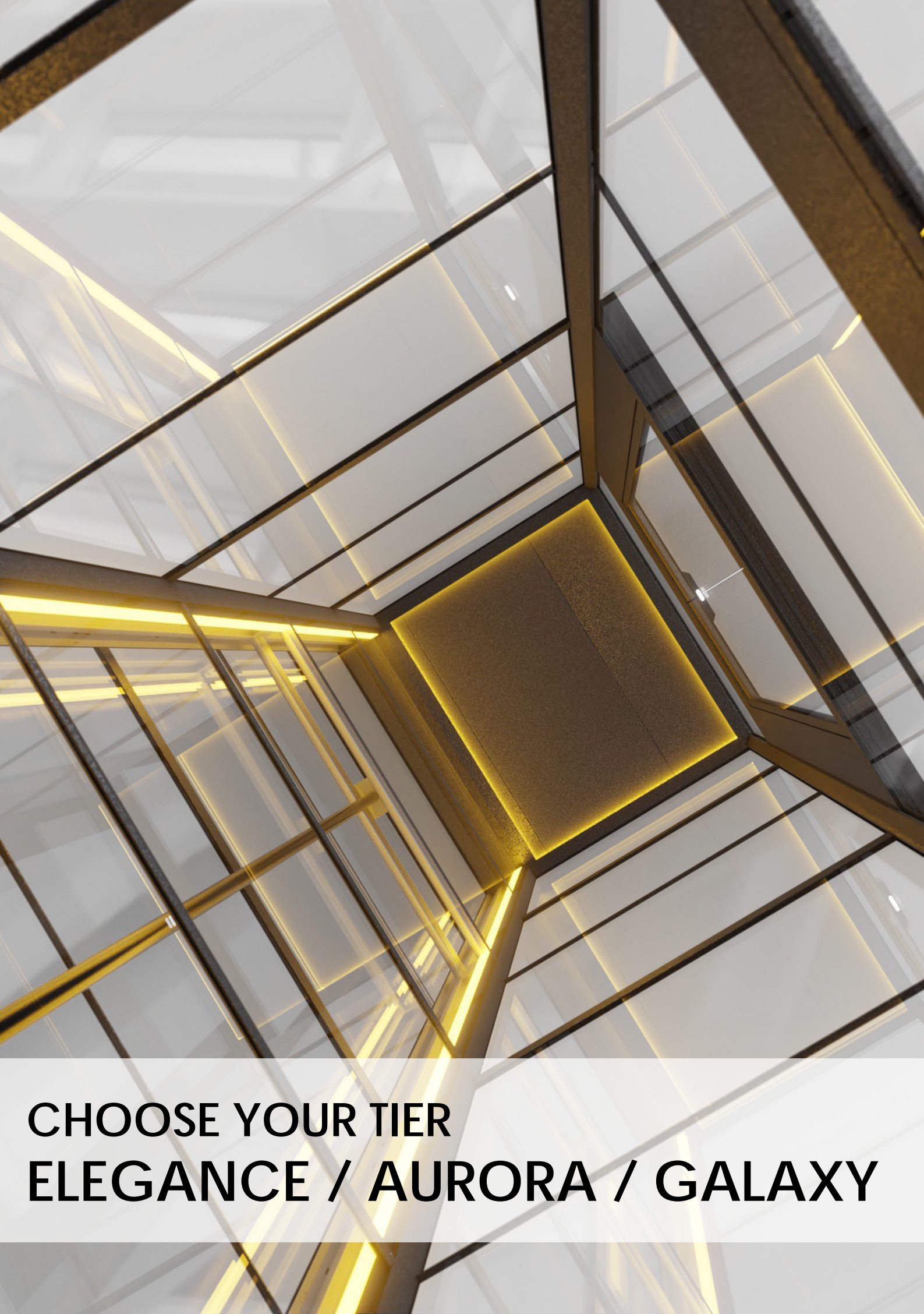
TIER II  
**AURORA**



TIER III  
**GALAXY**







**CHOOSE YOUR TIER**  
**ELEGANCE / AURORA / GALAXY**





TIER I  
**ELEGANCE**



TIER II  
**AURORA**



TIER II  
**AURORA**



TIER III  
**GALAXY**

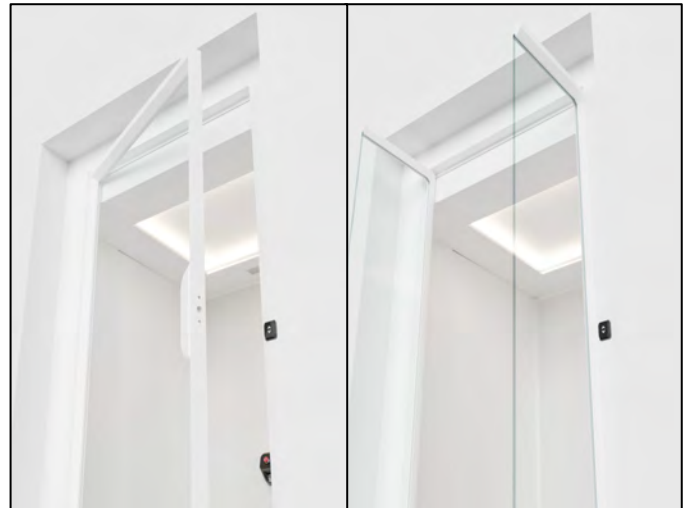


TIER I

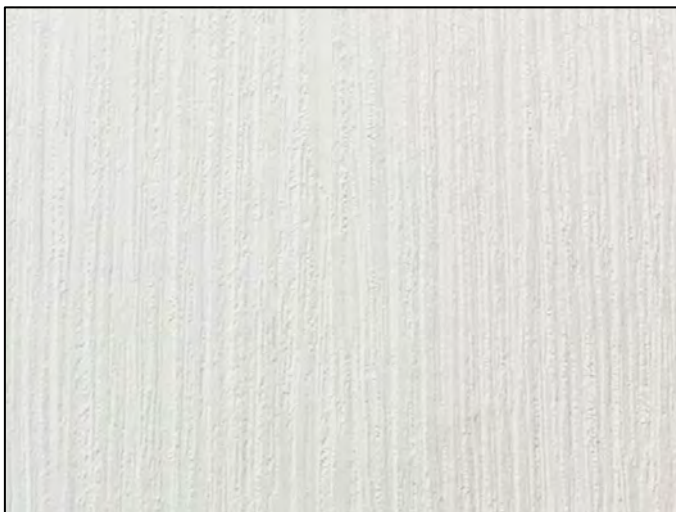
# ELEGANCE



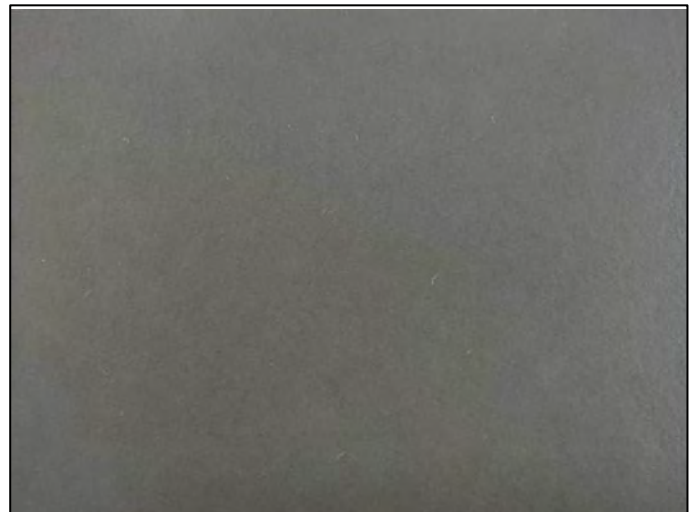
RECESSED LIGHTING



SWING OR SALOON DOORS



WHITE WOOD HPL PANEL



GREY IRON VINYL FLOORING



TOUCHSCREEN CONTROL PANEL



TOUCHSCREEN CALL BUTTON



## ELEGANCE MODELS



**V80**  
ELEGANCE



**V90**  
ELEGANCE



**V70**  
ELEGANCE



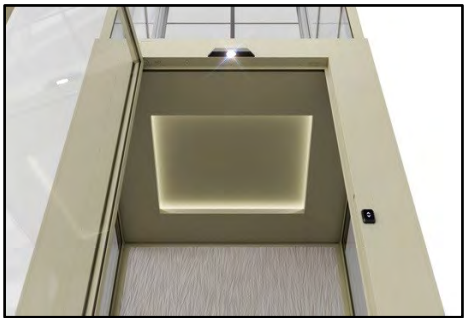
TIER II

# AURORA

## PREMIUM POWDER COATS



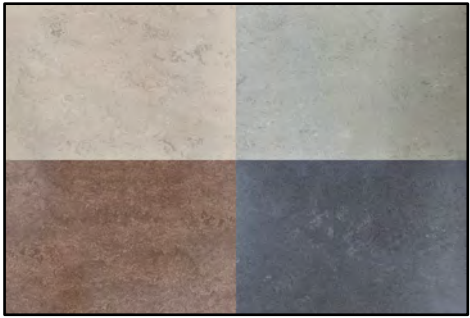
## HPL WALLS



RECESSED CEILING



SWING OR SALOON



STONE LIKE VINYL FLOORING



TOUCHSCREEN CONTROL PANEL



TOUCH CALL BUTTON





## AURORA MODELS



**V80**  
AURORA



**V90**  
AURORA



**V70**  
AURORA



TIER II

AURORA

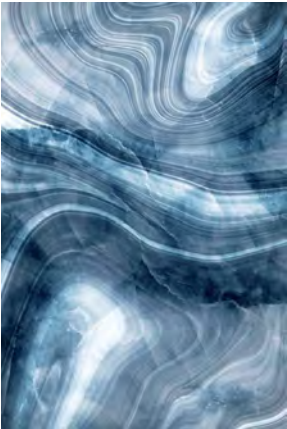
LIGHT UP MOOD WALLS



EVENING AGATE



IONA



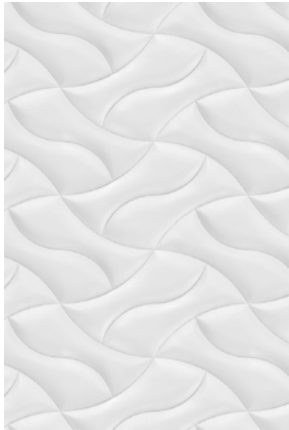
COBALT BLUE



PHARAOH



NOVA CLOUDS



INCA



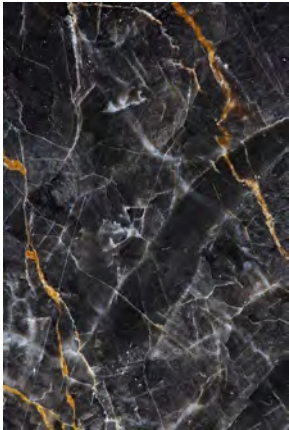
CINNABAR ROSE



PAVONA FEATHERS

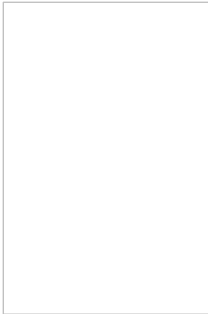


LONG SPRING

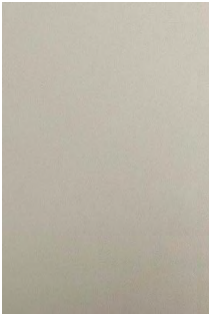


IMPERIAL BLACK

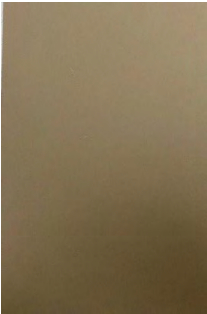
PREMIUM POWDER COATS



ORGANIC SIGNAL  
WHITE



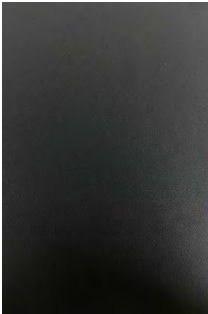
ORIENTAL OYSTER  
WHITE



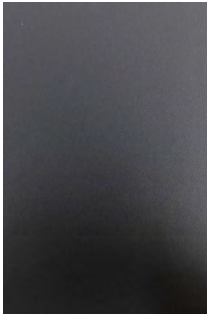
ORIENTAL GREY  
BEIGE



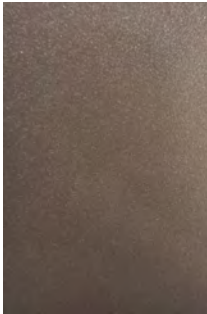
ORIENTAL PALE  
BROWN



GOthic GRAPHITE  
BLACK



GLACIAL SLATE  
GREY



ROMAN  
BRONZE



TOUCHSCREEN CONTROL PANEL



TOUCH CALL BUTTON





## AURORA MODELS



**V80**  
AURORA



**V90**  
AURORA



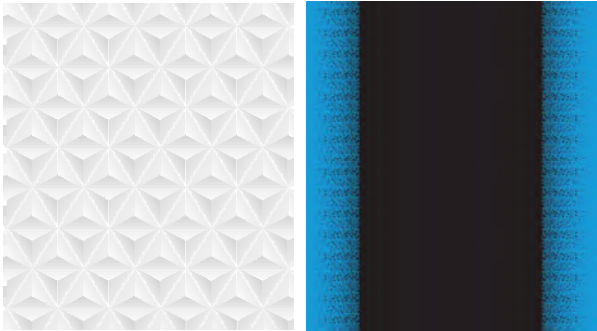
**V70**  
AURORA



TIER III

# GALAXY

LASER ETCHED LIT PATTERN



ORIGAMI

AWAKENING



PINE FOREST

NEON JAZZ

ARCTIC ICE

NEBULA

BASILICA LIGHTS

PREMIUM POWDER COATS



JANUARY 4

QUARTZ 1

QUARTZ 2

FEBRUARY 5

FEBRUARY 6

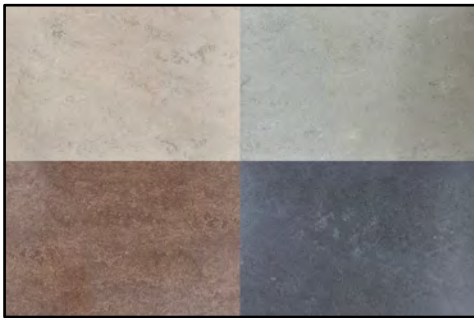
ROMAN GOLD



RGBW LIGHT LIGHTING



SWING OR SALOON



STONE LIKE VINYL FLOORING



PREMIUM TOUCHSCREEN CONTROL PANEL



ANIMATED CALL BUTTON





## GALAXY MODELS



**V80**  
GALAXY



**V90**  
GALAXY



**V70**  
GALAXY

	SIZE SUMMARY							
	CABIN SIZE (V70 & V90) (in mm)		PLATFORM SIZE (V80) (in mm)		SHAFT SIZE (in mm)		Cut-Out Size (add +30 mm on adjacent side to door)	
	A/C Side	B/D Side	A/C Side	B/D Side	A/C Side	B/D Side	A/C Side	B/D Side
1	710	815	635	850	1000	900	1040	940
2	810	815	735	850	1100	900	1140	940
3	910	815	835	850	1200	900	1240	940
4	1010	815	935	850	1300	900	1340	940
5	1110	815	1035	850	1400	900	1440	940
6	1210	815	1135	850	1500	900	1540	940
7	710	915	635	950	1000	1000	1040	1040
8	810	915	735	950	1100	1000	1140	1040
9	910	915	835	950	1200	1000	1240	1040
10	1010	915	935	950	1300	1000	1340	1040
11	1110	915	1035	950	1400	1000	1440	1040
12	1210	915	1135	950	1500	1000	1540	1040
13	710	1015	635	1050	1000	1100	1040	1140
14	810	1015	735	1050	1100	1100	1140	1140
15	910	1015	835	1050	1200	1100	1240	1140
16	1010	1015	935	1050	1300	1100	1340	1140
17	1110	1015	1035	1050	1400	1100	1440	1140
18	1210	1015	1135	1050	1500	1100	1540	1140
19	710	1115	635	1150	1000	1200	1040	1240
20	810	1115	735	1150	1100	1200	1140	1240
21	910	1115	835	1150	1200	1200	1240	1240
22	1010	1115	935	1150	1300	1200	1340	1240
23	1110	1115	1035	1150	1400	1200	1440	1240
24	1210	1115	1135	1150	1500	1200	1540	1240
25	710	1215	635	1250	1000	1300	1040	1340
26	810	1215	735	1250	1100	1300	1140	1340
27	910	1215	835	1250	1200	1300	1240	1340
28	1010	1215	935	1250	1300	1300	1340	1340
29	1110	1215	1035	1250	1400	1300	1440	1340
30	1210	1215	1135	1250	1500	1300	1540	1340
31	710	1315	635	1350	1000	1400	1040	1440
32	810	1315	735	1350	1100	1400	1140	1440
33	910	1315	835	1350	1200	1400	1240	1440
34	1010	1315	935	1350	1300	1400	1340	1440
35	1110	1315	1035	1350	1400	1400	1440	1440
36	1210	1315	1135	1350	1500	1400	1540	1440
37	710	1415	635	1450	1000	1500	1040	1540
38	810	1415	735	1450	1100	1500	1140	1540
39	910	1415	835	1450	1200	1500	1240	1540
40	1010	1415	935	1450	1300	1500	1340	1540
41	1110	1415	1035	1450	1400	1500	1440	1540

HOW TO UNDERSTAND THE NUMBERS

D

C

A

B & D are parallel to the screw and motor

CABIN SIZE is the standing space inside the lift

SHAFT SIZE is the final size of the installed shaft

CUT OUT SIZE is the space needed to install the lift



# TECHNICAL SPECIFICATIONS

## TECHNICAL DETAILS

	Cabin ( V70 / V90 )	Platform ( V80 )
MAX # OF STOPS	6 Stops	
MAX TRAVEL HEIGHT	13,000 mm with 1-phase / 20,000 mm with 3-phase	
POWER SUPPLY	1 phase 220V / 3 phase 220 V / 3 phase 400 V	
MINIMUM HEIGHT TOP FLOOR	2500 mm	2300 mm
BOTTOM PIT	100 - 120 mm / 0 mm optional with ramp	50 - 70 mm / 0 mm optional with ramp
PRODUCT STANDARD	MD 2006/42/EC, EN81-41, certified by SIL3	
DRIVE MODE	Screw-Drive	
RATED POWER	3 kW	
MACHINE ROOM	None (integrated solution)	
DOOR OPENING	One Side Only	Flexible choice for 3 sides
SAFETY DEVICE	360° catchment protection with light curtain. Emergency Battery Lowering in case of power failure. Overload alarm device. 2N phone-equipped emergency communication device. Electronic and mechanical safety door protection system. Can be connected to fire alarm device.	360° catchment protection with mechanical safety edge. Emergency Battery Lowering in case of power failure. Overload alarm device. 2N phone-equipped emergency communication device. Electronic and mechanical safety door protection system. Can be connected to fire alarm device.
SHAFT OPTION	Shaftless (V70) / Panoramic (V90)	Panoramic (V80)
LOCATION	Indoor or Outdoor	
SPEED	0.15 m/s / 0.25 m/s (with 3 phase)	0.15 m/s
GLASS	Tempered & Laminated	



## WHAT ABOUT SPEED?

# 0.15

Our standard and recommended speed for optimal operation.

0.15 m/s is the speed that is recommended by the EU EN81-41 machine directive for our range of platform lifts, which we also extend to our full range of products.

# 0.25

Thanks to our cabin design and light curtain safety edges, we are able to offer a faster speed of 0.25 exclusively on the V70 / V90 line when using 3-phase power without compromising safety in any way.

Enjoy a faster ride in full safety!

A NEW TYPE OF COP

# TOUCHSCREEN LUXURY

## ALARM BUTTON & PHONE

Press this for 10 seconds and your lift will automatically begin calling our hotline and your emergency numbers

## ANIMATED MOVEMENT

Numbers move and change in size as your lift goes from floor to floor

## EMERGENCY STOP BUTTON

Need to stop your lift for whatever reason? Press this wonderful light-up and metallic button, and your lift will come to an immediate halt

## CHROME FINISH

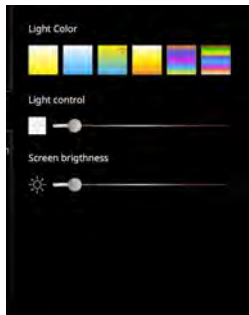
Available on Galaxy Tier only, the Chrome finish adds luxury and prestige to the COP

## LEATHER FINISH

With our leather finish on the handle, enjoy a refined riding experience like no other

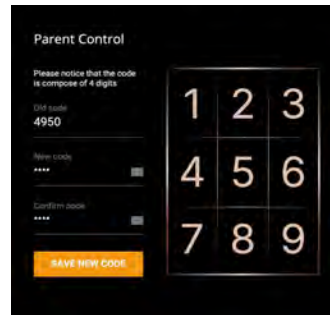






## LIGHT CONTROL

Control everything from the color and the brightness of the lights to the brightness of the touchscreen itself. Switch between recommended lighting schemes!



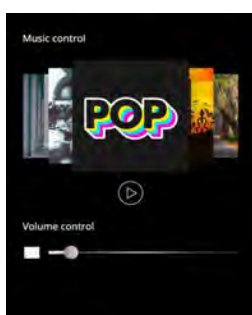
## PARENTAL CONTROL

Set-up, activate or deactivate a child lock for your Lift with a special PIN



## FAN CONTROL

Switch on / off or adjust the intensity of the fan directly on the COP



## MUSIC SELECTION

Ride in style by listening to our selection of songs pre-loaded onto your COP!



## ABOUT MY LIFT

Get information about your lift such as date of next maintenance, and distance travelled!

# Cibes

Bringing People Together

---

## CIBES LIFT LLC

### DUBAI SHOWROOM

Office 107 Bahwan Plaza  
Umm Al Sheif, SZR  
Dubai, UAE  
Tel: 04 255 9750  
Email: [info@cibeslifts.me](mailto:info@cibeslifts.me)

### ABU DHABI SHOWROOM

Office No. 2 Danet Abu Dhabi Tower  
Al Sa'adha Street, Danet  
Abu Dhabi, UAE  
Tel: 02 553 5725  
Email: [info@cibeslifts.me](mailto:info@cibeslifts.me)



Swedish Quality, Since 1947